

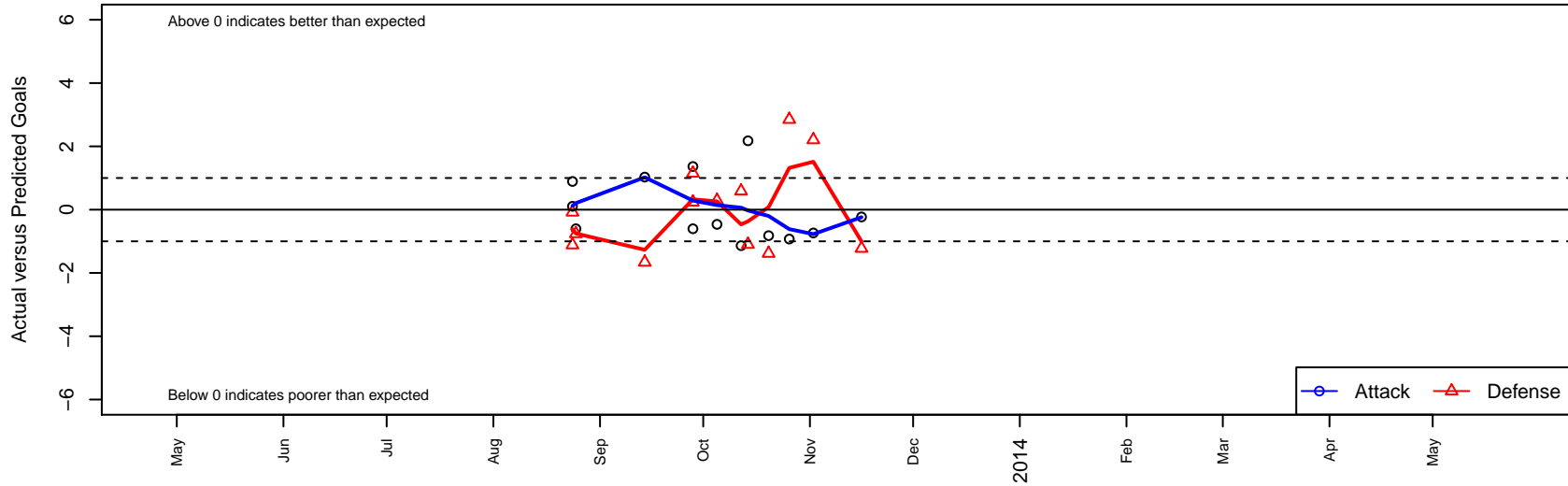
FC Spokane Grey 1 G02

FC Spokane
 Spokane, WA
 G02 total strength=66
 attack=0.12 defense=0.05
 fall league = PSPL-Inland Dev Div 1 U11
 notes= Densley 2013
 alt names used:
 FC SPOKANE G-02 - DENSLEY (WA)
 FC Spokane G-02 Grey - J.Densley

Venues played:
 River City Challenge Girls U-11 Flight 1 U11
 PSPL-Inland Dev Div 1 U11



FC Spokane Grey 1 G02
 Dots are actual minus expected GF (blue circles) and GA (red triangles).
 Blue line is smoothed change in attack strength. Red is smoothed change in defense strength.



	date	home		away		venue	pred.home	pred.away
2800	2013-11-16	Spokane Foxes Emerald G02	6	FC Spokane Grey 1 G02	1	PSPL-Inland Dev Div 1 U11	4.78	1.23
2561	2013-11-02	CDA Sting Sounders G02	1	FC Spokane Grey 1 G02	0	PSPL-Inland Dev Div 1 U11	3.21	0.74
2413	2013-10-26	FC Spokane Grey 1 G02	0	Cheney Storm FC G02	1	PSPL-Inland Dev Div 1 U11	0.93	3.85
2348	2013-10-20	ASE Royal G02	5	FC Spokane Grey 1 G02	0	PSPL-Inland Dev Div 1 U11	3.62	0.82
2208	2013-10-14	FC Spokane Grey 1 G02	4	CDA Sting Timbers G02	5	PSPL-Inland Dev Div 1 U11	1.82	3.90
2132	2013-10-12	Spokane Foxes Black G02	5	FC Spokane Grey 1 G02	0	PSPL-Inland Dev Div 1 U11	5.59	1.14
1933	2013-10-05	WA East Kaiel G02	5	FC Spokane Grey 1 G02	0	PSPL-Inland Dev Div 1 U11	5.29	0.46
1755	2013-09-28	FC Spokane Grey 1 G02	5	Sabers Dean G02	0	PSPL-Inland Dev Div 1 U11	3.64	1.15
1757	2013-09-28	FC Spokane Grey 1 G02	0	Breakers Merritt G02	5	PSPL-Inland Dev Div 1 U11	0.60	5.24
1446	2013-09-14	Spokane Foxes Gold G02	5	FC Spokane Grey 1 G02	3	PSPL-Inland Dev Div 1 U11	3.34	1.97
1112	2013-08-25	Breakers Merritt G02	6	FC Spokane Grey 1 G02	0	River City Challenge Girls U-11 Flight 1 U11	5.24	0.60
1071	2013-08-24	Sandpoint Strikers G02	3	FC Spokane Grey 1 G02	3	River City Challenge Girls U-11 Flight 1 U11	2.92	2.11
1072	2013-08-24	FC Spokane Grey 2 G02	6	FC Spokane Grey 1 G02	2	River City Challenge Girls U-11 Flight 1 U11	4.89	1.89